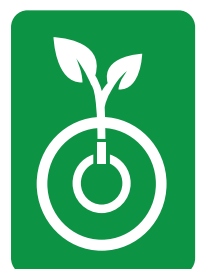
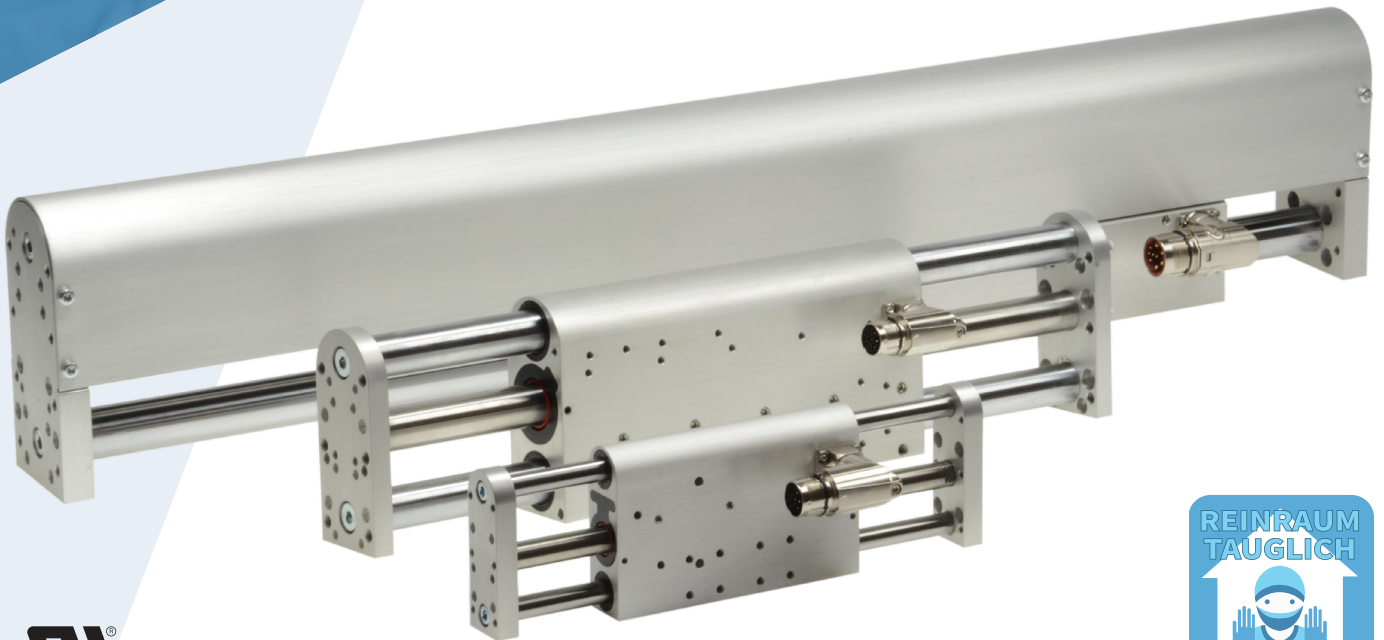


LinMot® DM01 Linear Modules with optional Force Sensor

LinMot®



High-precision DM01 Linear Modules from LinMot®

LinMot has the right product selection at hand for your demanding applications. LinMot's DM01 linear modules are highly dynamic, durable and easy to clean.

DM01 linear modules stand out due to their high rigidity, good running properties, low friction and easy cleaning.

With strokes up to 570 mm and forces up to almost 600 N, the modules can be used in a variety of applications.

The stator is well protected from dirt and is almost maintenance-free.

- ✓ Extreme stability guaranteed
- ✓ Available with clean room approval up to ISO4
- ✓ Load masses can be mounted on both sides
- ✓ Lubricants compatible for use in the food sector
- ✓ High quality and precision
- ✓ Highest dynamics with high positioning accuracy



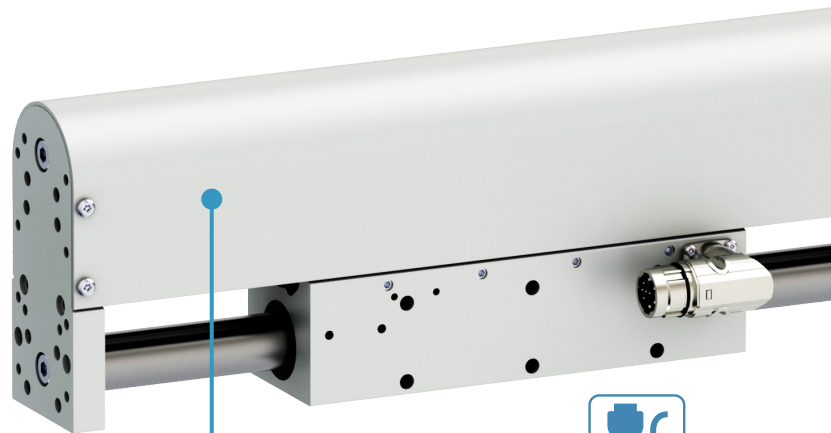
DM01-23



DM01-37



DM01-48

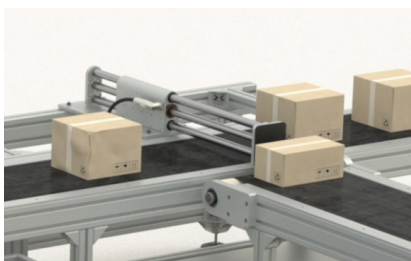


DM01-Module

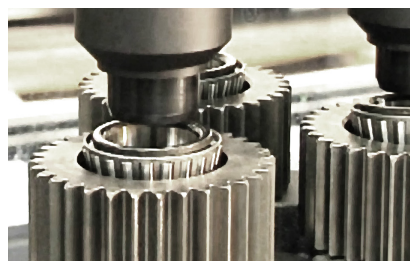


TYPICAL AREAS OF APPLICATION

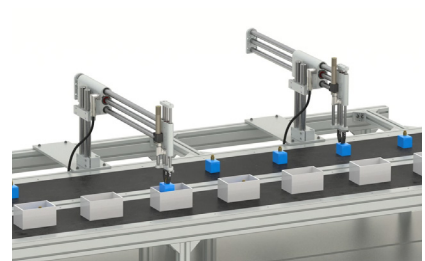
Expel



Joining / Pressing



Pick, (Rotate) & Place

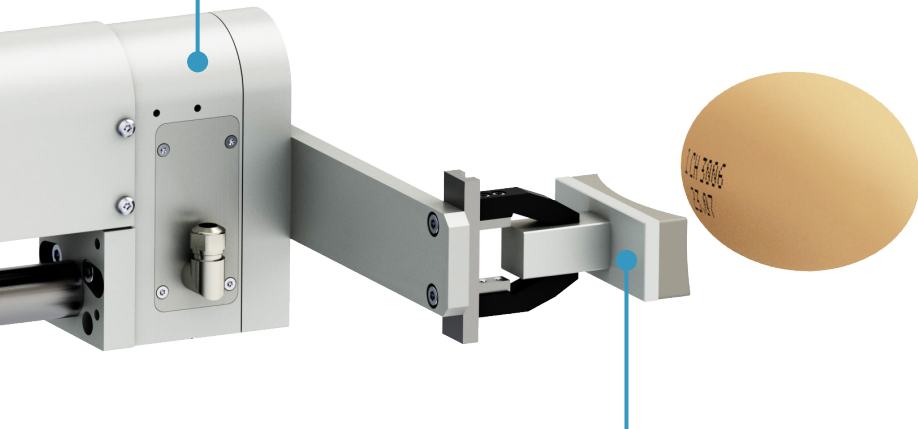




Optionally available with load compensation (MagSpring)

Optionally mountable force sensor
The optional force sensors impress with their ease of integration and enable the simple realisation of high-precision, force-controlled assembly and testing applications (Industry 4.0).

- ✓ Highest measuring accuracy despite mounting of gripper / tools directly on the sensor (force application side)
- ✓ Insensitive to lateral loads or lateral tilting moments
- ✓ High resistance to non-centric force application
- ✓ Calibrated sensor with 1% accuracy
- ✓ Large measuring range of ±500N



Example application for sensitive, eccentric force measurement with lever arm, gripper and stamp

Product video for the force sensor F05



TYPICAL INDUSTRIES

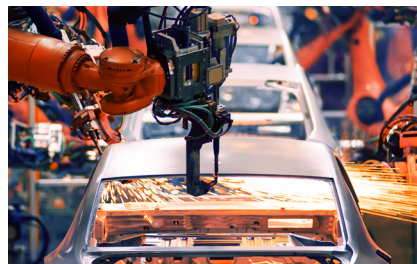
Handling & Assembly



Laboratory automation



Automobile



ALL LINEAR MOTION FROM A SINGLE SOURCE

NTI AG - LinMot & MagSpring
Bodenaeckerstrasse 2
CH-8957 Spreitenbach
Schweiz

☎ +41 56 419 91 91

✉ office@linmot.com

🏠 www.linmot.com

LinMot USA Inc.
N1922 State Road 120, Unit 1
Lake Geneva, WI 53147
USA

☎ 262.743.2555

✉ usasales@linmot.com

🏠 www.linmot-usa.com

LinMot[®]